

COMPUTER AND VIDEO SOURCES ON A SINGLE SCREEN

QUADVIEW HD

4 Window Real Time Display Processor

Four windows and background

**DVI, RGB, HDTV, S-Video,
NTSC/PAL inputs**

**Sixteen input multi-format video
switcher**

Smoothly scalable windows

Ethernet and USB control

Pan and zoom

Variable aspect ratio

10 bit pixel processing

Color backgrounds

Compact 1 RU chassis

RGB and DVI outputs

Titles and borders

Fifty programmable presets

KvM option

**Resolutions to 1920 x 1200p
and 2048 x 1080p**

On-screen cursor control

NTP clock option

The QuadView® HD offers the most powerful image processing available in a multi-viewer, with outstanding image quality, plus a web based control, dynamic window sizing, borders and titling, smooth zoom/pans and more. The QuadView HD is ideal for any application requiring display of multiple images on a monitor or projector.

The QuadView HD accepts high resolution DVI, RGB, HDTV, S-Video, component and NTSC/PAL composite video. Up to twenty four sources can be connected, four of which can be displayed simultaneously. The QuadView HD offers the highest quality graphics and HDTV rendition, with state-of-the-art deinterlacing and scaling. Picture quality sets a new standard for the industry.

An agile video switcher accepts up to sixteen video inputs, user configurable as sixteen composite, eight S-Video or five component video inputs, in any combination. Up to sixteen video inputs can be cycled through a single window with user selected timing.

The QuadView HD supports real time, dynamic movement and resizing of windows. Each input can be scaled and positioned anywhere on the screen, as well as panned and zoomed to emphasize areas of interest. Display alternatives are virtually infinite, and include quad split, side-by-side, picture-in-picture, and overlapping windows.

User-selectable output resolutions of up to 1920 x 1200p and up to 2048 x 1080p ensure a perfect match with any display. With DVI inputs and outputs, a completely digital signal path can be maintained from signal source to display.

Two exciting new display options are offered. The Background Video Option includes a package of capabilities, including an on-screen digital clock, logo or other foreground graphic, a live background or static backgrounds loaded over the Ethernet. A second option offers KVM capability to provide control of any computer or network controllable device displayed. Best yet, KvM™ is RGB Spectrum's patent pending implementation of traditional KVM, with full bandwidth video directly connected to the processor; only control signals are passed over the network. This implementation guarantees real time video performance, unavailable in other systems.

All functions are easily set up and controlled using a command line interface from either the USB or Ethernet ports, or graphically via a standard web-browser.

Built on RGB Spectrum's long tradition of quality and reliability, the QuadView HD is an excellent solution for all multimedia display, including the most demanding mission critical applications. And, it's available in a space saving 1 RU enclosure.

Specifications

Input Signals

| | |
|----------------------|---|
| Type / Number | 4 x RGB/HDTV (Y P _b P _r) 4 x DVI 1 x DVI optional background input Up to 16 x Composite Video, also configurable as up to 8 x S-Video or up to 5 x Component |
| Resolution | 640 x 480 to 1920 x 1200 and 2048 x 1080p 720p, 1080i, 1080p HDTV |
| Horizontal scan rate | 12 kHz to 125 kHz interlaced or non-interlaced |
| Frame rate | Up to 100 Hz |
| Video levels | 0.7 V p-p |
| Sync type | Sync on green, tri-level sync (HD), separate composite sync, or separate H-drive and V-drive |
| Connectors | 15-pin HD D-Sub (female) RGB 29-pin DVI-I DVI BNC (female) Video |

Output Signals

| | |
|----------------------|---|
| Type / Number | 1 x RGB/HDTV (Y P _b P _r) analog 1 x DVI digital |
| Resolution | 640 x 480 to 1920 x 1200 pixels and 2048 x 1080p |
| Horizontal scan rate | 12 kHz to 125 kHz |
| Frame rate | Up to 100 Hz |
| Video levels | 0.7 V p-p |
| Sync type | Sync on green, tri-level (HD only), separate composite sync, or separate H-drive and V-drive |
| Connectors | 29 pin DVI-I - DVI/RGB/HDTV (Y P _b P _r) |

Other

| | |
|---------------|--|
| Power | 100 - 240 VAC auto ranging 50 Hz - 60 Hz Less than 45 W |
| Control | Ethernet 10 / 100 BASE-T USB - B |
| Size | 1 RU Width 17.00" (43.2 cm) Depth 13.5" (40.1 cm) Height 1.75" (4.5 cm) |
| Rackmount kit | Included |
| Weight | Approximately 13.5 lbs. (6.8 kg.) |

May 2008
Specifications subject to change without notice
Made in the USA ©2008 RGB Spectrum



Tactical Operations Centers

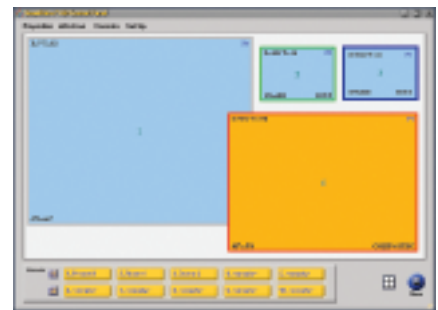
Control Rooms

Network Operations Centers

Naval & Airborne Consoles

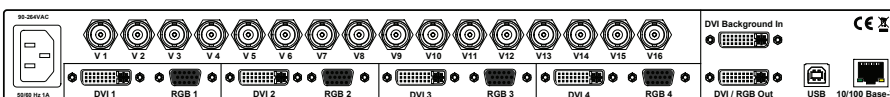
Video Teleconferencing

Security/Surveillance



QuadView HD Web Interface

Operate the processor's display capabilities remotely from any web browser.



Front and Rear Panels with optional Background input

Corporate Headquarters
950 Marina Village Parkway
Alameda, California 94501
TEL: (510) 814-7000
FAX: (510) 814-7026
WEB: www.rgb.com
e-mail: sales@rgb.com

