



Traditional video quads display each video signal at 25% of true resolution. The new 4View is different - all four video inputs can be displayed at full resolution on a high resolution display, up to 1600 x 1200 pixels. The improvement in visual quality is stunning. The unit can be configured to standard video rate output if required.

Providing outstanding image quality plus features like web based control, dynamic window sizing, borders and titling, and smooth zoom and pans, the 4View is ideal for any application requiring the display of multiple video images on a single screen.

Each input can be sized and positioned anywhere on the screen, as well as panned and zoomed to emphasize areas of particular interest. Display alternatives are virtually infinite, and include multiple display, quad split, side-by-side, picture-in-picture, and overlapping windows.

A Narrow Blanking Option is available to display the full image area of specialized instrumentation recorders.

All functions are easily set up and controlled remotely using a command line interface from either the RS-232 or Ethernet ports, or graphically via a standard web browser.

### Security

### Video Teleconferencing

### Monitoring & Surveillance

### Distance Learning

### Entertainment & Sports Venues

### Public Display

### Control Rooms

## FOUR VIDEO INPUTS ON A SINGLE SCREEN

### 4View™ XL

Four Window Real Time Display Processor

#### NTSC/PAL and S-Video inputs

#### Output to 4X video resolution

#### Images displayed any size, anywhere

#### Zoom and pan

#### Ethernet and RS-232 control

#### Web operation

#### 4:3 and 16:9 displays

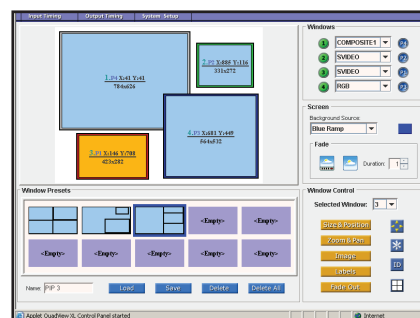
#### Colored backgrounds

#### Titles and borders

#### RGB/DVI outputs

#### Compact 1RU size

#### Image freeze



### Web Interface

Operate all of the processor's display capabilities remotely from any web browser with the Web Control Panel (WCP™).

## Specifications

March 2006  
Specifications subject to  
change without notice  
Made in the USA  
©2005 RGB Spectrum

### Input Signals

---

Type / Number	4x NTSC/PAL Composite Video 4x S-Video A Narrow Blanking Option is available to display the full image area of specialized instrumentation recorders.
---------------	---

### Output Signals

---

Type	RGB/DVI on DVI-I connector
Resolution	640 x 480 to 1600 x 1200 pixels
Horizontal scan rate	12 kHz to 125 kHz interlaced or non-interlaced
Video levels	0.7 V p-p
Sync type	Sync on green, separate composite sync, or separate H-drive and V-drive

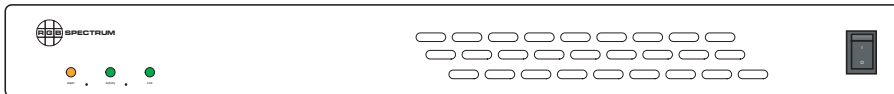
### Other

---

Power	90 - 264 VAC auto range 50/60 Hz Less than 40 W
Control	Ethernet 10 / 100 BASE-T RS-232 Web interface
Size	1 RU Width 17.25" (43.8 cm) Depth 15.75" (40.1 cm) Height 1.75" (4.5 cm)  Rackmount kit included
Weight	Approximately 10.75 lbs. (4.87 kg)



## Front and Rear Panels



Corporate Headquarters  
950 Marina Village Parkway  
Alameda, California 94501  
TEL: (510) 814-7000  
FAX: (510) 814-7026  
WEB: [www.rgb.com](http://www.rgb.com)  
e-mail: [sales@rgb.com](mailto:sales@rgb.com)

**RGB SPECTRUM®**  
a visual  
communications  
company™

